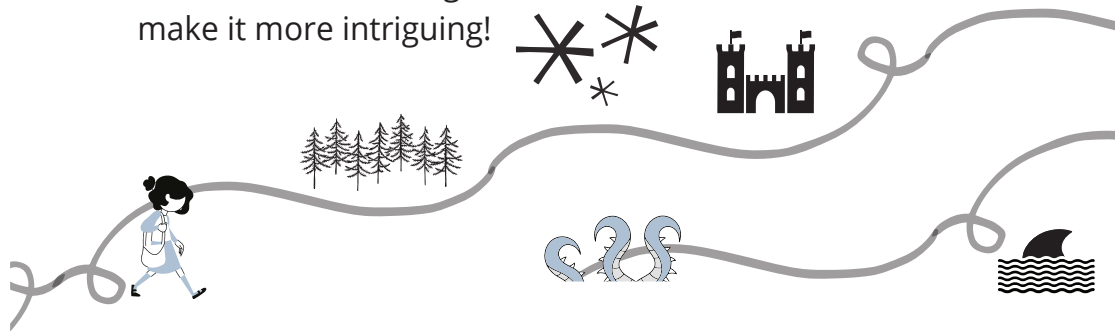


# Story Map



1. Measure out at least 1 metre of the lining paper and draw a winding road lengthways across it. Include some side roads with dead ends and lanes looping back to the main road again to make it more intriguing!

2. Include interesting landmarks and obstacles along the route (draw these at the side of the road). Trees are nice - so are shark-infested duck ponds!



3. Add in some nice friendly people (or sheep) along the way too. They can help your main character to get out of that shark-infested duck pond!



5. Think carefully about how your main character will react to all those strange situations, don't be afraid to write yourself down a dead end and back out again!



4. You can now start writing your story along the road you have drawn out. Follow the road and try to incorporate as many of the obstacles and friends as you can as you go.



6. Will your story be funny, scary, historical, mystery or fantasy? Maybe a mash up or something totally different? You won't know until you start out on the road.



James Nichol

